

# AVID NEXIS



## Workflow-optimized tiered storage for real-time media production

Avid NEXIS® is the media industry's most comprehensive and reliable shared storage solution, offering efficient, scalable storage tiering on premises and in the cloud. Optimized to accelerate media workflows, it enables teams to collaborate faster and achieve better efficiency and security across flash, online, nearline, and archive storage. It's the storage solution the industry relies on to help them adapt to the changing needs and unpredictability of today's media production.

### AVOID PRODUCTION DISRUPTION AND ACHIEVE MAXIMUM UPTIME

From the largest broadcasters and media enterprises, to post-production facilities big and small, industry professionals trust Avid NEXIS to power their critical media workflows. That's because it delivers the proven reliability you need to optimize the entire lifecycle of your content at every stage—from ingest, editing, and finishing, to project parking, backup, repurposing, and archive.

### BALANCE COSTS AND PERFORMANCE WITH SCALABLE TIERED STORAGE

Empower teams with faster, more efficient access to your entire library of assets, whether housed in online, offline, nearline, or archive storage tiers—on premises or in the cloud. With its modular, scale-out design, you can scale Avid NEXIS to meet the needs of any size team, project, and workflow, lowering operational costs and complexity. Cost-effectively scale capacity and bandwidth to more than you will ever need—without disruption or downtime.

### ACCELERATE PRODUCTION WITH WORKFLOW-OPTIMIZED PERFORMANCE

Avid NEXIS delivers powerful performance and the best user experience for today's complex media workflows across a wide range of Avid and third-party applications, services, and systems. Quickly scale and optimize performance to meet the fluctuating demands of any project with your media applications of choice.

### PROTECT YOUR ASS(ETS)

Media creators live and breathe by the content they create. Avid NEXIS provides the bulletproof security and fail-safe protection you need to keep your media and workflows safe. From single- and dual-disk protection, automatic drive rebuild, and media mirroring, to high availability options and the ability to set user permissions down to the folder level, you can create and collaborate with confidence.

### KEY FEATURES

- > Enable real-time and remote collaboration across flash, online, nearline, and archive storage tiers—on premises or in the cloud
- > Scale capacity and bandwidth with ease—from 9.6 TB to over 10 PB of total storage, and over 25 GB/s of total bandwidth
- > Quickly adapt storage capacity, performance, and protection on the fly to meet changing requirements, without disruption or downtime
- > Safeguard all assets with the utmost security, reliability, and protection, including high-availability and media-mirroring options
- > Centralize your entire media library for faster, easier file search and access
- > Get performance on demand with the intelligent Avid NEXIS | FS file system
- > Work with your favorite Avid and third-party tools, including Media Composer®, Pro Tools®, MediaCentral®, Adobe® Premiere® Pro, Autodesk Flame, and more
- > Simplify nearline workflows, keeping media within easy reach for rediscovery and reuse
- > Control workspace access with folder-level permissions
- > Easily manage and monitor your system from anywhere using a computer or mobile device
- > Instantly expand your Avid NEXIS storage to the cloud with Avid NEXIS | Cloudspaces™



FOR MORE INFORMATION, VISIT  
[avid.com/nexis](https://avid.com/nexis)



# Avid NEXIS— Workflow-optimized tiered storage for real-time media production

## BUILD YOUR OWN

Mix and match enterprise-class (“E”) engines into a single system for maximum performance and capacity, and scale both by adding more Media Packs. For smaller teams and remote productions, Avid NEXIS | PRO is ideal.

Avid NEXIS | E2, E4, and PRO storage engines feature an embedded System Director for systems management, making it more affordable for smaller workgroups to benefit from the advantages Avid NEXIS offers. For larger scale deployments, high availability, and to deploy E5 and/or E5 NL engines, add the external System Director Appliance to boost your capabilities. You can even add a Redundant Controller to your System Director Appliance for an additional level of protection.

### Using the embedded System Director

#### Avid NEXIS | E2 SSD, E2, and E4 storage engines

- > Enables up to 560 TB of storage capacity with 4 Media Packs (up to 2.4 GB/s total bandwidth)
- > Supports up to 40 active 1Gb, 10Gb, and 40Gb Ethernet-connected clients
- > Supports 8 million files

### Adding the System Director Appliance with Extended File System license

#### Avid NEXIS | E2 SSD, E2, E4, E5, and E5 NL storage engines

- > Enables up to 3.8 PB of raw storage capacity with 24 Media Packs (up to 9.6 GB/s total bandwidth)
- > Supports up to 165 active 1Gb, 10Gb, and 40Gb Ethernet-connected clients and 20 million files
- > Provides redundancy when a second controller is added

### Adding the System Director Appliance with Advanced File System license

#### Avid NEXIS | E2 SSD, E2, E4, E5, and E5 NL storage engines

- > Enables over 10 PB of storage capacity with 64 Media Packs (more than 25 GB/s total bandwidth)
- > Supports up to 330 active 1Gb, 10Gb, and 40Gb Ethernet-connected clients and 20 million files
- > Provides high availability when used with the Redundant Controller

Here’s a look at the hardware components you can choose to create your own custom Avid NEXIS storage system.

### Avid NEXIS | E5

### Avid NEXIS | E4

## STORAGE ENGINES



Designed for large-scale broadcast and post-production environments, this enterprise-class, enterprise-level storage engine offers high availability, the highest level of scalability, performance, and client connections, and requires an external System Director Appliance.

For mid- to large-size post-production, broadcast, audio, government, corporate, and media education environments, this enterprise-class, facility-level storage engine offers high availability, scalability, performance, and collaboration.

#### Features

- > Avid NEXIS | FS file system (enables you to access, scale, customize, reconfigure, manage, protect, and secure your system)
- > 240 TB–1.12 PB of storage capacity with up to 8 Media Packs (60 TB, 100 TB, or 140 TB HDDs, offering up to 3.2 GB/s of bandwidth)
- > Scalable from 240 TB–8.96 PB by combining E5 with other E-class engines into a single system with up to 64 Media Packs total
- > Modular field-replaceable storage engine controller
- > Two hot-swappable SSDs for system configuration and metadata management
- > Two hot spare hard disk drives
- > 40 Gigabit Ethernet (40GbE)
- > Redundant power and cooling
- > 5U rack-mountable chassis

- > Avid NEXIS | FS file system (enables you to access, scale, customize, reconfigure, manage, protect, and secure your system)
- > 60–280 TB of storage capacity with up to 2 Media Packs per engine (60 TB, 100 TB, or 140 TB HDDs, offering up to 1.2 GB/s of bandwidth)
- > Scalable from 60 TB–8.96 PB by combining E4 with other E-class engines into a single system with up to 64 Media Packs total
- > Modular field-replaceable storage engine controller
- > Two hot-swappable SSDs for system configuration and metadata management
- > 10 Gigabit Ethernet (10GbE)
- > Redundant power and cooling
- > 4U rack-mountable chassis

#### Base configurations

- > Single engine controller with 4 x 60, 100, or 140 TB Media Packs
- > Single engine controller with 8 x 60, 100, or 140 TB Media Packs

- > Single engine controller with 2 x 60, 100, or 140 TB Media Packs

#### Options

- > Redundant Controller
- > 60, 100, and 140 TB Media Packs

- > Redundant Controller
- > 60, 100, and 140 TB Media Packs
- > Two hot spare hard disk drives

# Avid NEXIS—Workflow-optimized tiered storage for real-time media production

## Avid NEXIS | E2

## Avid NEXIS | E2 SSD

### STORAGE ENGINES



For small- to mid-size post-production, broadcast, audio, live event, house of worship, government, corporate, and media education environments, this enterprise-class, team-level storage engine offers high availability and great scalability, performance, and collaboration.

For post-production facilities that require maximum media throughput for demanding finishing, color grading, and VFX workflows, Avid NEXIS | E2 SSD delivers the highest level of performance.

#### Features

- > Avid NEXIS | FS file system (enables you to access, scale, customize, reconfigure, manage, protect, and secure your system)
- > 60–140 TB of storage capacity with a single Media Pack per engine (60 TB, 100 TB, or 140 TB HDDs, offering up to 600 MB/s of bandwidth)
- > Scalable from 60 TB–8.96 PB by combining E2 with other E-class engines into a single system with up to 64 Media Packs total
- > Modular field-replaceable storage engine controller
- > Two hot-swappable SSDs for system configuration and metadata management
- > 10 Gigabit Ethernet (10GbE)
- > Redundant power and cooling
- > 2U rack-mountable chassis

- > Avid NEXIS | FS file system (enables you to access, scale, customize, reconfigure, manage, protect, and secure your system)
- > 9.6 TB, 19.2 TB, or 38.4 TB of storage capacity per E2 SSD engine with a single Media Pack, offering up to 3 GB/s of bandwidth
- > Scalable from 9.6 TB to more than 2 PB of flash storage by combining up to 64 E2 SSD engines into a single scale-out system
- > Modular field-replaceable storage engine controller
- > Two hot-swappable SSDs for system configuration and metadata management
- > 40 Gigabit Ethernet (40GbE)
- > Redundant power and cooling
- > 2U rack-mountable chassis

#### Base configurations

- > Single engine controller with 1 x 60, 100, or 140 TB Media Packs

- > Single engine controller with 1 x 9.6, 19.2, or 38.4 TB SSD Media Packs

#### Options

- > Redundant Controller

## Avid NEXIS | E5 NL

## Avid NEXIS | PRO

### STORAGE ENGINES



For Avid NEXIS-equipped, MediaCentral-enabled creative teams working in demanding broadcast and post-production environments, this high-density, disk-based, nearline storage engine streamlines the media workflow between active and non-active production and requires an external System Director Appliance.

For independent professionals, small post-production, audio, house of worship, government, corporate, and media education environments, this professional-class standalone storage system can be used alongside other Avid NEXIS storage engines, but not physically mixed with them.

#### Features

- > Avid NEXIS | FS file system (enables you to access, scale, customize, reconfigure, manage, protect, and secure your system)
- > 480 TB–1.28 PB of redundant nearline storage capacity with four or eight 120 TB or 160 TB Media Packs (offering 1 GB/s of bandwidth per engine)
- > Scalable from 480 TB–10.24 PB by combining multiple engines together; can also be mixed with enterprise-class Avid NEXIS engines
- > Field-replaceable storage engine controller
- > Two hot-swappable SSDs for system configuration and metadata management
- > 10 Gigabit Ethernet (10GbE)
- > Redundant power and cooling
- > 5U rack-mountable chassis

- > Avid NEXIS | FS file system (enables you to access, scale, customize, reconfigure, manage, protect, and secure your system)
- > 40 TB of storage capacity with a single Media Pack per engine (offering up to 600 MB/s of bandwidth)
- > Scalable from 40–160 TB by combining one to four Avid NEXIS | PRO engines together (cannot be mixed with E-class engines)
- > Field-replaceable storage engine controller
- > Two hot-swappable SSDs for system configuration and metadata management
- > 10 Gigabit Ethernet (10GbE)
- > Redundant power and cooling
- > 2U rack-mountable chassis

#### Base configurations

- > Single engine with 8 x 120 or 160 TB Media Packs
- > Single engine with 4 x 120 or 160 TB Media Packs

- > Single engine with 1 x 40 TB Media Pack

# Avid NEXIS—Workflow-optimized tiered storage for real-time media production

## System Director Appliance

## Avid NEXIS | Cloudspaces

### OPTIONS



The external System Director Appliance is available in two options and is required for any Avid NEXIS E-class system that meets one or more of the following criteria:

- › Requires more than 40 client connections
- › Houses five or more Media Packs (50 drives) across all networked engines
- › Contains an Avid NEXIS | E5 or E5 NL storage engine
- › Requires mirror media protection

Free up Avid NEXIS storage space and safely back up projects to the cloud. For small- to medium-size news, sports, and post-production organizations, Avid NEXIS | Cloudspaces is an add-on service available for all Avid NEXIS systems, providing a super-simple way to park projects and sync onsite Avid NEXIS workspaces to the cloud for easy offsite backup and uninterrupted production.

### Features

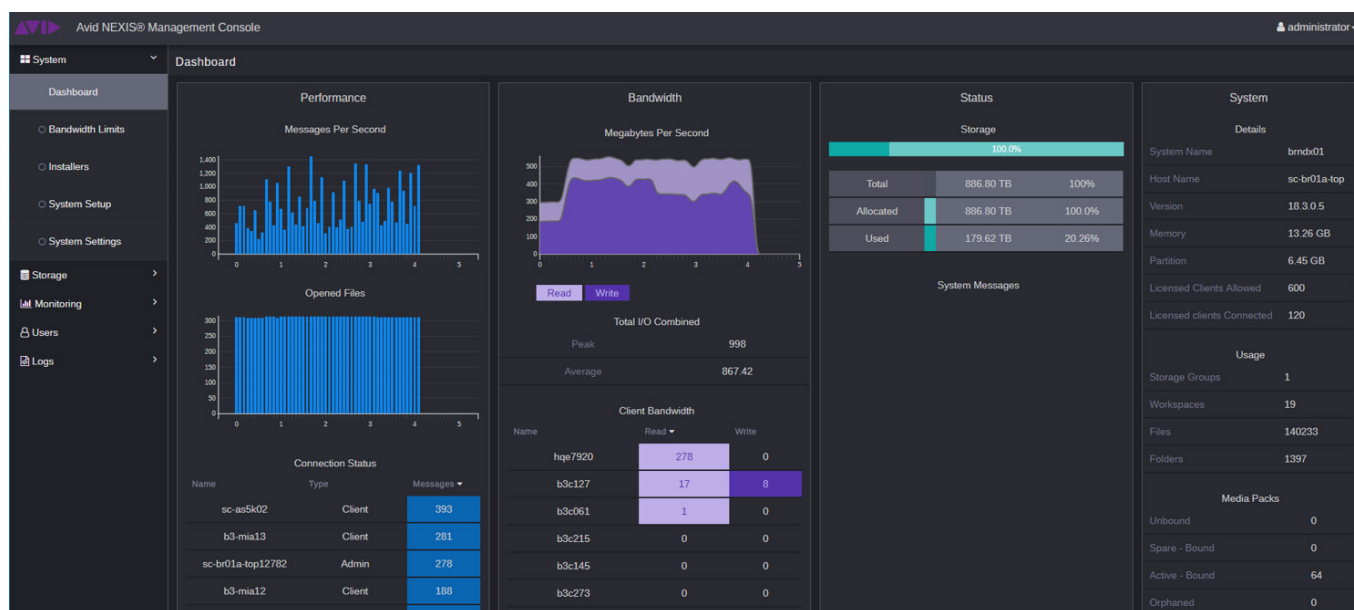
- › Enables a single Avid NEXIS system to support 5–24 Media Packs with an Extended File System license, or 5–64 Media Packs with an Advanced File System license
- › Enables a single Avid NEXIS system to support more connected clients simultaneously—up to 165 with an Extended license or up to 330 with an Advanced license
- › Enables high availability performance and protection
- › Increases the total system-supported file count from 8 million to 20 million files
- › Modular field-replaceable system director controller
- › Two hot-swappable SSDs for system configuration and metadata management
- › Redundant power and cooling
- › Provides redundancy when used with the Redundant Controller
- › 2U rack-mountable chassis

- › Free up space on your onsite Avid NEXIS system to keep production moving
- › Sync on-premises Avid NEXIS workspaces to the cloud for easy backup
- › Choose a subscription that best matches your storage budget and business needs with annual 5 TB, 10 TB, and 25 TB plans available
- › Scale storage capacity as needed at any time, on demand

### Options

- › Redundant Controller—provides high availability when added

All Avid NEXIS storage engines and the System Director are compliant with the California SB-327 law for IoT and network-connected devices, providing built-in measures for more secure password protocol.



Easily manage, monitor, and configure your Avid NEXIS system from anywhere, using any computer or mobile device, with the Management Console.

FOR MORE INFORMATION, VISIT [avid.com/nexis](https://avid.com/nexis)