

ESSENTIALS

- Browse and search Dalet Galaxy MAM from Adobe Premiere Pro
- Save against a placeholder in the production system from Adobe Premiere Pro
- Support “Edit while Ingest/Record”
- Option to work in proxy resolution and only render in high resolution to save on bandwidth
- Search and view all content of the media library from any location
- Designed for fast accessibility, the user interface is very intuitive
- Time-based metadata (Closed Captions, QC, Censorship, Editorial Review, etc.) preserved from Dalet Galaxy MAM to Adobe Premiere Pro & vice versa
- Metadata Export from Adobe Premiere Pro to Dalet can trigger a wide variety of workflows
- Dalet Xtend GUI is available in multiple languages

Connecting Creatives to the Workflow

Whether it is for news, sports, post-production, program preparation & promo production or any other professional media management workflow, Dalet solutions enable broadcasters, content owners and media professionals to take complete control of their workflow to create, manage and distribute content to both traditional and new media channels.

The Dalet Xtend module allows Adobe Premiere Pro CC video editors, both on Mac and PC, to become users of the Dalet Galaxy Media Asset Management (MAM) and Orchestration platform. Not only do they get direct access to the central repository of all media assets, they can actually collaborate with all Dalet users in their environment and workflow such as journalists, prep-editors, sports producers and other production personnel.

New in this version:

- HTML-5 Dalet Xtend panel for Adobe Premiere Pro
- Configurable metadata form for exporting back to Dalet Galaxy - based on metadata selection, can trigger various workflows
- Support for multi-sequence export - choose to render selected or all sequences at once back to Dalet Galaxy in a single click
- Locator inheritance from Adobe Premiere Pro to Dalet Galaxy
- Support 'while' scenario when exporting from Adobe Premiere Pro to Dalet Galaxy

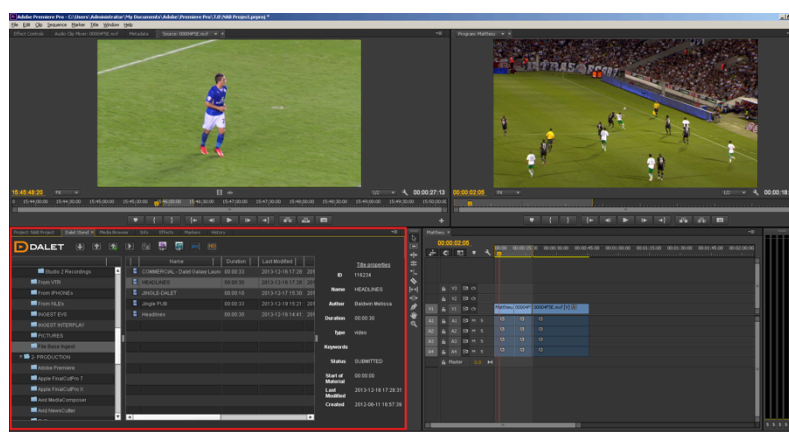


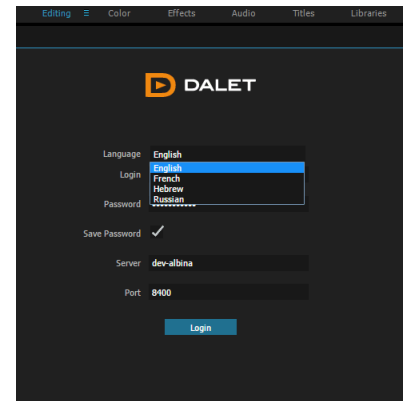
Figure 1 Dalet Xtend Plugin for Adobe® Premiere® Pro CC

DETAILED OVERVIEW

THE BASICS

Connecting Adobe Premiere Pro workstations to the Dalet Galaxy MAM brings the following capabilities:

- **Search, browse and preview assets** from the central catalogue.
- Import full videos, or selections of videos, audio, images, as well as Adobe Premiere Pro projects and sequences.
- Granular **user rights management** integrated with the corporate Active Directory helps editors only see the content that is relevant to them.
- Let creatives **forget the technical hurdles**: as the MAM manages the complexity of combining various storage locations and file formats.
- **Digital content rights** information in the Dalet Galaxy system carries over to Adobe Premiere Pro, thus preventing restricted or partially restricted content from being available to video editors until embargos are lifted.



IMPORTING TITLES

In order to import titles, EDLs or clips into Adobe Premiere Pro, video editors browse the Dalet MAM catalogue in the Dalet Xtend panel, preview any content and simply double-click on the titles that they need. This imports the selected content to the Adobe Premiere Pro bin.

Video Editors can import full video titles, audio, images as well as EDLs and shot selections made by other users of the Dalet Galaxy platform such as journalists or production assistants. The import process is instantaneous as it merely points Adobe Premiere Pro to the media location on the central storage; all editing happens in place, with no file movement.

Moreover, editors can save Adobe Premiere Pro projects or sequences as assets in Dalet Galaxy. It is thereby possible to start working on an Adobe Premiere Pro workstation, save the project to Dalet Galaxy, and then import it to another Adobe Premiere Pro workstation to resume work. Hence projects no longer need to be linked to a physical workstation allowing more flexibility and collaboration in the editing process.

EDIT IN PLACE & WORKING WITH GROWING FILES

Using Dalet Xtend, Adobe Premiere Pro editors can access video material as it is still being recorded. For example, if a video server or a storage unit controlled by Dalet Galaxy is receiving a live football game feed, the Dalet Xtend plugin allows the Adobe Premiere Pro editor to access the file as it is growing, so that highlights can be edited, rendered and pushed to be aired.

PROXY EDITING

Dalet Galaxy can systematically create proxy versions of all material in the catalogue. The Dalet Xtend plugin allows Adobe Premiere Pro editors to build their editing project using these proxies. Once the project is completed in proxy, the editor can then switch back to high resolution to finish the work and save it to the Dalet MAM. Associations between the proxy and the corresponding high-resolution material are managed automatically by Dalet Galaxy.

Benefits of using proxies for Adobe Premiere Pro editing include:

- Reduced usage of network bandwidth between the central storage and the editing workstation
- More workstations can be installed on the same infrastructure
- Less file movement and copies of content made

BI-DIRECTIONAL METADATA EXCHANGE

Dalet Xtend imports metadata along with media so that editors do not waste time finding the appropriate shot for their project. For compliance editing, both manual and automatic technical Quality Control is carried out in Dalet. At all stages, the compliance metadata is attached to the asset, allowing editors to be alerted of potential issues, such as color correction or inconsistent audio levels that need to be remedied during editing.

- **Locators**: time-coded metadata stored in Dalet Galaxy includes manual annotations, closed captions extracted from video, report data from media analysis (like QC), censorship markers, information from third-party systems, etc. It is passed on to Adobe Premiere Pro and displayed as markers in the Source window, on the editing timeline and in the Markers tab. Any change to the markers in Adobe Premiere Pro automatically updates the locators in the Dalet system.

- **Genealogy:** Dalet Galaxy tracks the history of each asset, the relationship between assets and parents to children relationships for all assets created from selections of others. This applies for titles created through editing on Adobe Premiere Pro as well. Metadata then flows from parents to children ensuring all information is preserved including rights information.
- **Project Locking:** The Dalet system prevents content in Adobe Premiere Pro Sequences and Projects from being deleted unless given permission to do so.

When exporting content back to Dalet Galaxy, a customizable metadata form ensures that video editors enter information about the asset, so that it can be searched in the Dalet MAM catalogue.

On top of this, based on the metadata entered on the exported asset, various workflows can be triggered such as updating the traffic system, transcode content for CMS upload or complete a video editing user task for a production workflow.

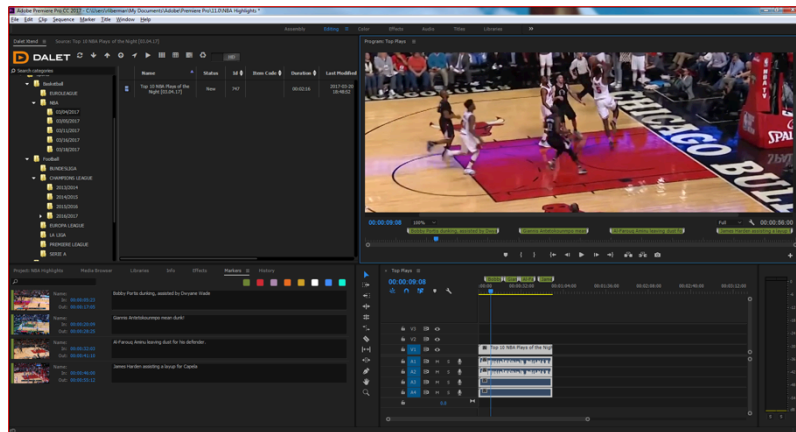


Figure 2 Metadata Locators Imported with Media from Dalet Galaxy

RENDERING OVER A PLACEHOLDER

Video editors can directly save against a placeholder within Dalet Galaxy. Placeholders can be automatically created by Dalet Workflow Engine based on input from third-parties such as a traffic system (content programming) or NRCS (placeholder associated to a news story).

Rendering over a placeholder allows Dalet Galaxy to process the content while it is still being written by the Adobe Premiere Pro rendering engine. This enables very low-latency scenarios such as a breaking news, allowing the control room to trigger playout of the content before the rendering is complete.

Saving against a placeholder also allows Dalet Workflow Engine to notify third parties and/or trigger processes such as distribution and transmission, based on rules configured in Dalet Galaxy.

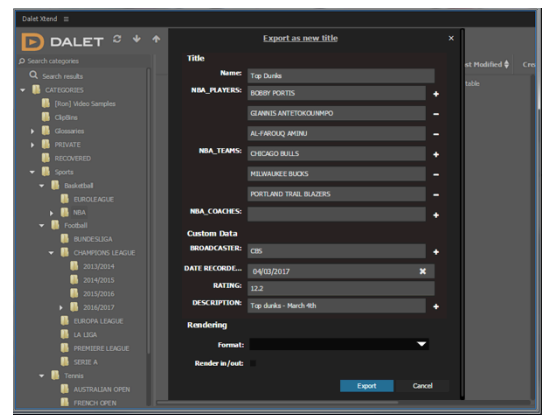


Figure 3 Configurable Metadata Form for Export

Want to know more?

Dalet Digital Media Systems software solutions are used by Content Owners, Broadcasters, Sports Organizations and Post Production Facilities worldwide.

To find out more, contact your local Dalet channel partner, or contact Dalet:

ddms@dalet.com

www.dalet.com

Headquarters:

16, rue Rivay - 92300 Levallois-Perret - France

+33 1 41 27 67 00

Dalet is a registered trademark of Dalet S.A. All other trademarks are the property of their respective owners. The information contained in this document is subject to change without notice or obligation.



DALET
DIGITAL MEDIA SYSTEMS